



# PAWS

## Bark Park



**A Special Social  
Canine Community  
For You and  
Your Best Friend!**



It's Unanimous...

**"We Want to Join the PAWS Bark Park Club!"**

- Double Gated Entry
- Key Card Entry
- Large & Small Dog Area
- Parking
- Restroom
- Seating
- Shade Structure
- Waste Stations
- Water Fountain

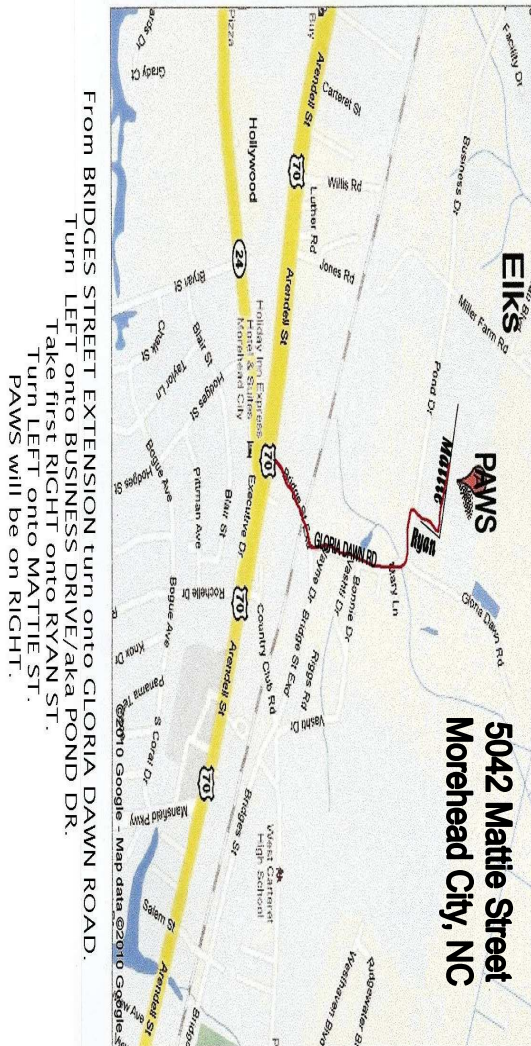


Pet Adoption and Welfare Society of Carteret  
P.O. Box 1757  
Morehead City, NC 28557

Phone: 252-808-1729

Fax: 252-726-4441

Web: [www.pawsofcarteret.org](http://www.pawsofcarteret.org)

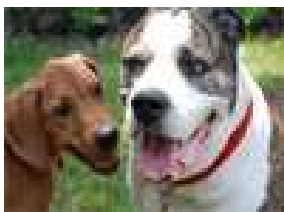


## Benefits

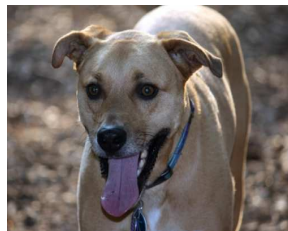
## Pointers

## Precautions

*For many people, visiting a dog park is a primary source of recreation.*



*As members we are on our honor to keep a clean, disease free park for our canine companions and fellow members to enjoy.*



*We must keep safety our first and foremost concern for owners & dogs.*



- Provides a way for dog owners living in apartments, condos, or homes with small yards to let their dogs run off leash and exercise in a fenced area.
- Provides a way for the elderly, sick, and disabled dog owners to exercise their pets. For many dog owners, a dog park may provide the only opportunity for owners to socialize with other people and their dogs.
- Makes a dog a better pet and neighbor because an exercised and well socialized dog is less likely to bark excessively, destroy property, or become aggressive.
- Creates a greater sense of community by bringing people of all ages and from all walks of life together with a common interest.
- As leash laws become more prevalent and more strictly enforced and as human population demands reduce the amount of available dog-friendly spaces, owners are turning to Dog Parks as alternatives, to exercise and socialize their canine companions. Dogs are free to run, play, socialize, explore, and "just be dogs." There are over 1100 dog parks in the United States and Canada combined!

- ✓ Scoop the poop right away using the bags stored in the conveniently located dispensers. Only use disposal containers that are marked as such. All eyes will be on you, so please don't forget. Waste is the single most important responsibility of owners and compliance will ensure the success of the PAWS Bark Park.
- ✓ Keep your dog on leash until you enter the double-gated entry area. Once inside the park, all dogs should be off-leash. Leashed dogs may feel threatened and growl or bark when approached by off-leash dogs.
- ✓ Keep the park gates closed, and watch for dogs on the other side when entering or leaving, so they do not escape. Watch your dog to prevent him/her from escaping the off-leash area. Supervise your dog closely at all times to prevent aggression and other inappropriate behavior. Stay close, but let your dog interact.
- ✓ A first time dog-park visit can be a little stressful for the novice user (canine and human), if you are a first time visitor, consider visiting the park at non-peak times. (Peak times are Monday through Friday, late afternoon until dark and on weekends by 9 a.m.) Familiarize yourself and your dog with the park by walking along the fence perimeter.

Simply stated, dog parks are a place where people and their dogs can play together. We offer dogs off-leash play areas while their people enjoy the park-like setting.

We must keep safety our first and foremost concern. The dog park is NOT a safe place for children therefore, it is strongly urged that small children not be brought into the park.

Be aware that dogs have different play styles. Educate yourself on dog behavior. Ask questions. A behavior that concerns you may simply be a rambunctious play style. We have many very dog-knowledgeable members.

Don't over react to "normal" dog park behavior. Being overprotective just makes your dog nervous and a scared dog is an aggressive dog. The most important thing to know is what behavior is normal for your dog, and what the warning signs are that your dog may be ready to leave.

Thank you for considering the PAWS Bark Park for you and your canine companion. Please help make this a safe and happy place to visit often.

